

Do you want to  
contribute your ideas,  
shape the challenges of  
today and tomorrow  
and help contribute to a  
more just, equitable and  
impactful world? Then  
become part of our  
growing team!

ES&RE



Fund



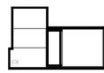
Design



Market



AM



**Our team** is at the center of everything we do! At ESG RE, we deliver seamless capital, design, management, and marketing solutions that unlock asset performance, elevate portfolios, and future-proof investments across the real estate lifecycle. With a unique vertical structure, ESG RE meets clients where they are — whether improving project/portfolio IRR, strengthening tenant sentiment, de-risking capital, or repositioning portfolios for long-term resilience. Our integrated verticals — fund, design, asset management, and market — compound value across every stage and asset class, delivering measurable, repeatable outcomes. From single assets to portfolios, ESG RE empowers developers, investors, asset managers, owners, and lenders to achieve superior asset design, financial returns, and sustainability performance — all while navigating today's evolving real estate landscape with confidence.

**As design director you will oversee our design vertical**

- ESG Asset Design
- Model. Validate. Outperform
- Building Design Features & Quantify Impacts
- Advise Stakeholders
- Asset/Portfolio-level

#### Fund



- ✓ ESG-priced debt
- ✓ Enhanced returns
- ✓ Capital efficiency

#### Design



- ✓ Compounds IRR
- ✓ Reduces risk
- ✓ 1200%+ ROI

#### AM



- ✓ Risk mitigation
- ✓ 7%+ in asset value
- ✓ NOI optimization

#### Market



- ✓ Lease-up boost
- ✓ Stabilizes quicker
- ✓ Cap markets story

ESG RE



Fund



Design



Market



AM



## What you'll do from day one...

- Convey and embed environmental, social, governance/sustainability and financial impacts throughout design, bid, build and beyond
- Communicate, set and advise on the value drivers from the developmental, financial, and total lifecycle lenses
- Ensure compliance, manage investor relations, and serve as market-facing point of contact for institutional-grade investors
- Have a strong comprehension of the total real estate fulfilment process
- Guide verticals turn-key process for sustainably developed, financed, planned, built and operated ESG-Rated Sustainable Building & Real Estate
- Convey verticals asset administration process to clients and prepare hand/off to project management team
- Consultant/partner with real estate developers financial institutions
- Structure ESG-grade cap stacks and present offers
- Leverage verticals to drive new, existing, recently completed and retro-active asset opportunities internally and externally
- Liaison, delegate and manage key project deliverables with project management based upon actual plans, timetables, and delivery

—  
S E R E



Fund



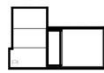
Design



Market



AM



ESG RE's fully integrated verticals are unlimited throughout asset class specificity, have no project stage limitations, or zero negative cost-drivers whatsoever. Its ability to seamlessly apply across all asset classes is a strategic unlock for you're portfolio - NY Developer

#### PROVEN PERFORMANCE AT SCALE

Results from ESG RE Vertical Integration

Asset Type	IRR Lift	DSCR	CapEx Saved	Equity at Risk
Multifamily	+8.2%	+35-55bps	\$5.6M per asset	14% avg. drop
Mixed-use	+9.1%	+45-60bps	\$7.4M per asset	17% avg. drop
Hospitality	+8.9%	+50bps	\$6.7M per asset	16% avg. drop
Tower	+7.8%	+35-40bps	\$11.1M per asset	13% avg. drop
Industrial	+9.4%	+40-55bps	\$6.3M per asset	15% avg. drop
Portfolio	+8.68%	+42 bps	\$6.82M	15%

#### ESG RE | ALL VERTICAL ROI 1200%+



Any questions about the role or to discuss strategic opportunities... don't hesitate to get in touch. Interested in joining our team please send your details to [team@esg-re.com](mailto:team@esg-re.com)

ESG RE



Fund



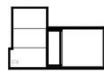
Design



Market



AM



ESSE RE



Fund



Design



Market



AM